

**MEET
PLAY**

***PULLMAN BASEL
EUROPE***





MEETING

	MEET HALFDAY MORNING	MEET HALFDAY AFTERNOON	MEET BASIC	MEET CLASSIC
DURATION IN HOURS	4-5 UNTIL 13:00	4-5 FROM 12:00	UNTIL 5	UNTIL 5
AIR-CONDITIONED CONFERENCE ROOM WITH NATURAL DAYLIGHT	✓	✓	✓	✓
PRESENTATION TECHNOLOGY 85" MONITOR OR PROJECTOR & SCREEN FLIPCHART, LOUDSPEAKER, PRESENTER WRITING PADS	✓	✓	✓	✓
WIFI	✓	✓	✓	✓
WELCOME COFFEE	✓		✓	✓
SWISS MINERAL WATER UNLIMITED	✓	✓	✓	✓
COFFEE BREAK MORNING	✓		✓	✓
3 COURSE MENU OR LUNCHBUFFET	✓	✓		✓
SANDWICH LUNCH 4 DIFFERENT SANDWICH, SOUP OR SALAD BUFFET			✓	
COFFEE BREAK AFTERNOON		✓	✓	✓
AFTER-MEET APÉRO		✓	12,-	12,-
PRICE IN CHF	98,- PER PERSON	98,- PER PERSON	95,- PER PERSON	115,- PER PERSON

ADDITIONAL SERVICES (PRICES PER PERSON)

SMOOTHY BAR FOR COFFEE BREAK	5,-	5,-	5,-	5,-
SOFT DRINKS UNLIMITED IN THE MEETING ROOM	4,50	4,50	4,50	4,50
DINNER 3 COURSE MENU BISTRO / LES QUATRE SAISONS	49,- / 69,-	49,- / 69,-	49,- / 69,-	49,- / 69,-

MORE DAILY FLAT RATE INCLUDING OVERNIGHT STAY

	1. DAY	2. DAY	3. DAY	PRICE P. PERS.
DAILY FLAT RATE (MEET CLASSIC)	✓	✓	✓	109,- PER DAY
AFTER-MEET APÉRO		✓		OFFERED
OVERNIGHT STAY INCLUDING BREAKFAST	✓	✓		FROM 150,- PER NIGHT
		FROM 518,-	FROM 627,-	



GALERIE 1



FOYER



PULLMAN BASEL EUROPE

CLARASTRASSE 43- 4058 BASEL - SCHWEIZ
 T. +41 61 690 80 80
 BANKETT.EUROPE@BALEHOTELS.CH
 PULLMAN-BASEL-EUROPE.COM

ADDITIONAL TECHNICAL FACILITY

	CHF
FLIPCHART INKL. PENS	40,-
PIN BOARD	25,-
MICROPHONE	60,-
VIDEO CONFERENCE	250,-



WELCOME COFFEE CHF 12

- CROISSANTS
- ORANGE JUICE



COFFEE BREAK MORNING CHF 16

- 2 JUICES
- INFUSED WATER
- PATRIES
- FRUIT YOGHURT
- SMOOTHIE
- COUNTRY BAR
- DAY SURPRISE



COFFEE BREAK AFTERNOON CHF 16

- 2 JUICES
- INFUSED WATER
- SAVOURY SNACK
- FRUITS
- CAKE
- DAY SURPRISE



LUNCH CHF 45

- 3 COURSE MENU OR LUNCH BUFFET
- 1 SOFT DRINK
- COFFEE / TEA

DINNER CHF 49

- 3 COURSE MENU OR DINNER BUFFET
- 1 GLASS OF WINE, BEER OR SOFT DRINK

DINNER DE LUXE CHF 69

- IN THE FINE DINING RESTAURANT "LES QUATRE SAISONS"
- EXCLUSIVE 3 COURSE MENU
- 1 GLASS OF WINE, BEER OR SOFT DRINK

AFTER MEET APERO CHF 12

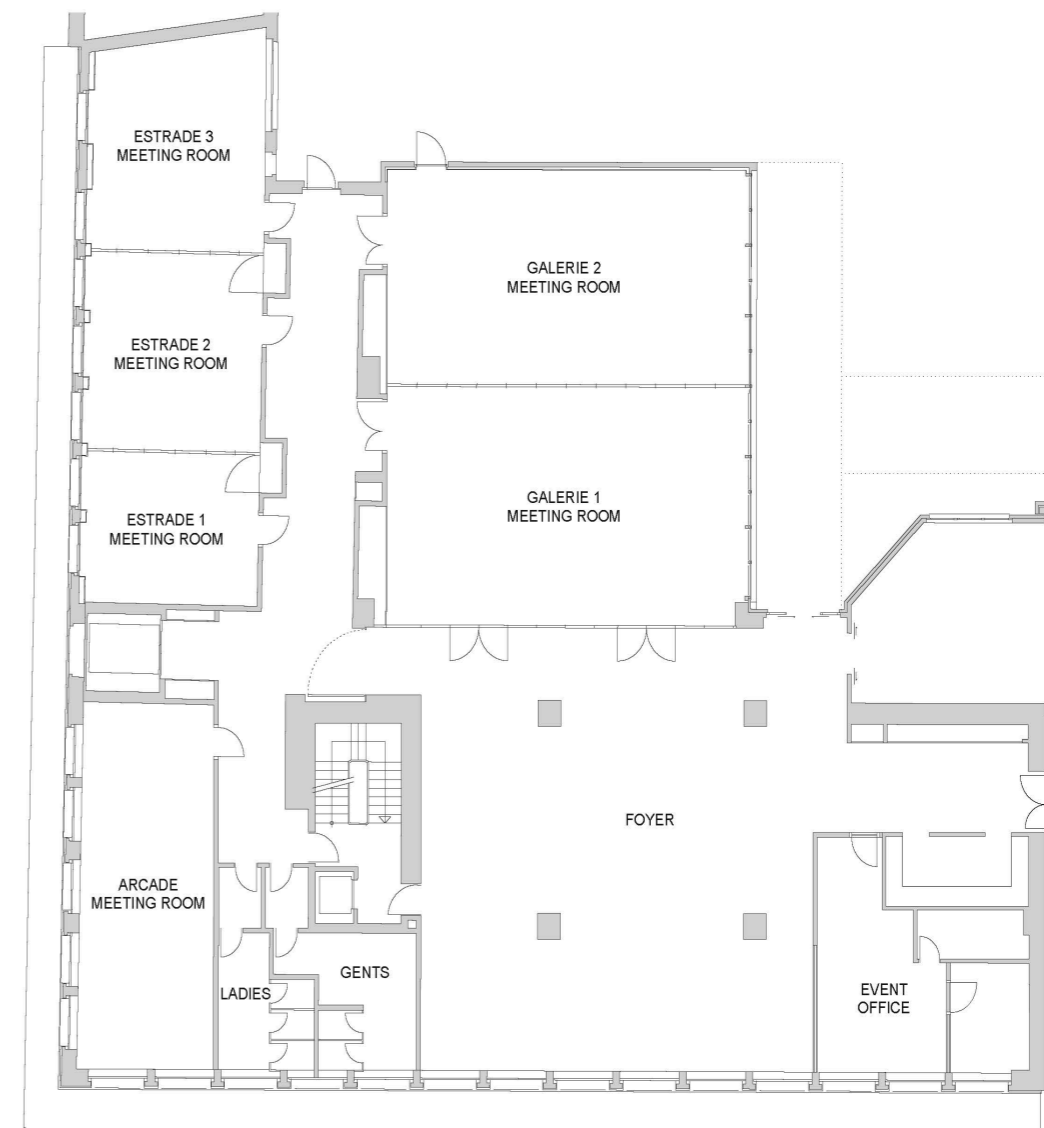
- COCKTAIL OF THE DAY
- SPARKLING WINE, WINE, BEER, SOFT DRINK
- SALTY SNACK
- MAX. 1/2 HOUR

COURTYARD



ARCADE

FUNCTION ROOMS



MEETING ROOMS	AREA (M ²)	L	W	CEILING	U-SHAPE (SINGLE)	CLASS-ROOM	BOARD-ROOM	THEATRE	BANQUET	CABARET	CHF 1/2 DAY 8-13 12-18	CHF 1 DAY 5 HOURS
GALERIE 1	94	8	12	3,75	30	50	30	90	70	35	850	1100
GALERIE 2	85	7	12	3,75	30	50	30	90	70	35	850	1100
GALERIE 1&2	179	15	12	3,75	40	150		190	140	70	1550	2000
ESTRADE 1	30	5	6	2,70			10	12	10	15	400	500
ESTRADE 2	40	6,5	6	2,70	12	14	12	25	20	12	450	550
ESTRADE 3	40	6,5	6	2,70	12	19	12	25	20	12	450	550
ESTRADE 1 - 3	108	18	6	2,70	36	50	40	85	68	35	980	1350
ARCADE	51	10	5	2,70	16	25	24	40	30	18	500	700
FOYER	155			2,70								
LES QUATRE SAISONS	170	17	10	3,25					50		1550	2000



pullman
HOTELS AND RESORTS